

**3-year
warranty**



V1258

Automatic fish fillet
skinning machine

for **all types**
of **fish fillets**

An automatic machine for shallow
or deep skinning

- ▶ Single lane machine
- ▶ Removable infeed conveyor belt
- ▶ Thickness adjustment with notches
- ▶ Interchangeable blade
- ▶ Outfeed belt (optional)

V1258 Automatic fish skinning machine

The V1258 is an easy to use, semi-industrial, single track automatic skinning machine at a competitive price. It is placed on a support on wheels and proposed with an outfeed belt (optional).

Specially designed for firm-fleshed fish such as trout or salmon, the V1258 can skin both fresh (water) and smoked (air) fillets.

The V1258 is equipped with a notch thickness adjustment system.

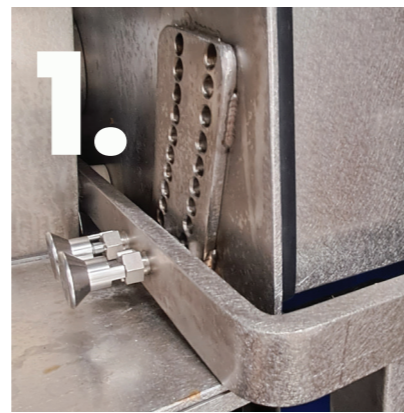
Its small footprint is achieved by replacing the outfeed belt with a tilting slide that can be removed without tools, to receive the products in boxes.

Finally, this automatic machine improves the safety of the user.



Key features

1. Thickness adjustment with notches
2. Single lane machine
3. Removable infeed conveyor belt
4. Interchangeable blade
5. Industrial capacity: up to 60 fillets/min
6. 100% stainless steel



The V1258 machine has a notch thickness adjustment system.

Options available

- ▶ Outfeed belt (removable without tools)
- ▶ Curved skinning roller (for a better output when deep skinning smoked products)

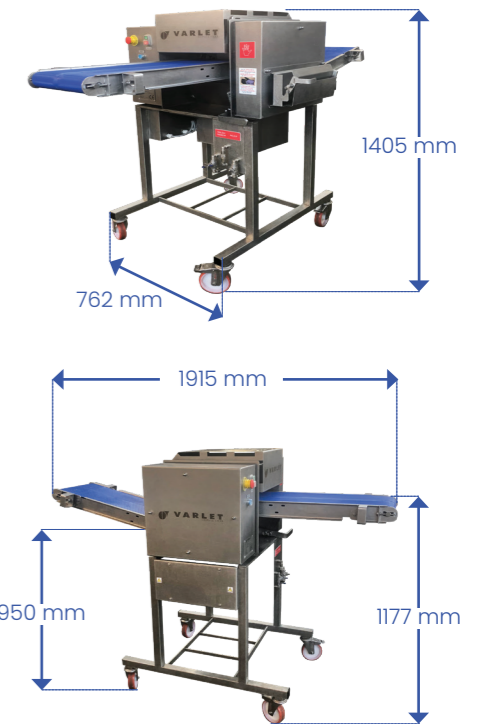


Smoked trout coming out of the V1258 skinning machine (regular skinning)

Technical information

Capacity: up to 60 pieces/min
Working width: 320 mm
Water injection: 8 l/min at 2 bars
Height, infeed belt: 1050 mm
Height, outfeed slide: 780 to 870 mm
Height, outfeed belt (optional): 1000 mm
Standard power connection: 3 x 400 V, 50 Hz*
Power consumption: 1 x 0.55 kW
Noise level: 65 dB (A)

* other power connection available upon request



Flash this QR code to watch the video introducing the V1258 machine



	V1258 (without outfeed belt)	V1258TS (with outfeed belt)
Dimensions (H x L x D)	1400 x 800 x 1200 mm	1400 x 800 x 1915 mm
Working width	320 mm	320 mm
Weight	159 kg	175 kg
Lane	single lane	single lane





VARLET MACHINES

Founded in 1933, Varlet Machines is a French company based in Boulogne-sur-Mer, which designs, manufactures and sells machines for processing fish, meat and poultry.

With an experience of more than 80 years and the will to answer the more and more demanding expectations of the market, the company is today the first French manufacturer of machines in this field.



Varlet Machines, 12-14, rue de Magenta,
62200 BOULOGNE-SUR-MER, FRANCE



Tel. : +33 (0)3 21 31 49 26



contact@varletmachines.com



www.varletmachines.com